

# MADDEN PUMP

## Heavy Duty, Industrial Mixers & Agitators



AH1B1-S - -  
High Speed Mixer



AM3B3-S - -  
Medium Speed Mixer



AL1T4-S - -  
Low Speed Mixer

### Madden's Industrial Mixers

Madden offers three different lines of heavy duty, industrial mixers at an extremely competitive price. These mixers, also known as agitators, serve a vast array of industrial applications across the world; the mixing process and applications include, but are not limited to:

- Liquid Blending
- Solids Suspension
- Gas Dispersion
- Dissolving Solids
- Chemicals
- Mining processes
- Petroleum processes
- Slurries
- And more!

# MADDEN ENGINEERED PRODUCTS

## Mixer Part Number Form

Mixer Series
AH - High speed (1750 rpm) AM - Med speed (116-350 rpm) AL - Low speed (<116 rpm)
Propeller/Turbine Qty
1 2 3 4+ *Contact factory
Propeller/Turbine Type
B1 - 4" dia 3 blade marine prop. B2 - 6" dia 3 blade marine prop. B3 - 8" dia 3 blade marine prop.  T1 - 8" dia 4 blade turbine T2 - 10" dia 4 blade turbine T3 - 12" dia 4 blade turbine T4 - 14" dia 4 blade turbine T5 - 16" dia 4 blade turbine  T6 - 18" dia 4 blade turbine T7 - 20" dia 4 blade turbine T8 - 22" dia 4 blade turbine T9 - 24" dia 4 blade turbine

Shaft Material
S - 316SS
Shaft Diameter
0 - 5/8" 1 - 3/4" 2 - 1" 3 - 1.25" 4 - for larger sizes contact factory
Shaft Length
** - enter length in inches
Gear Box
A - none B - 5:1 C - 15:1 D - 30:1 E - 60:1 F - 100:1 G - *contact factory for other

Motor H P
0 - (zero) - No Motor A - 1/3 HP C - 1/2 HP D - 3/4 HP E - 1 HP F - 1.5 HP G - 2 HP
Motor Type
S - Standard X - Explosion Proof W - Washdown Duty M - Mill & Chem Duty H - 50 Hz Z - Special Order
Motor Phase
1 - Single Phase 3 - Three Phase
(OPTIONAL) Variable Speed
For inverter duty, variable speed mixers, add ' <u>V</u> ' to end of model number. (Frequency drive sold separately)

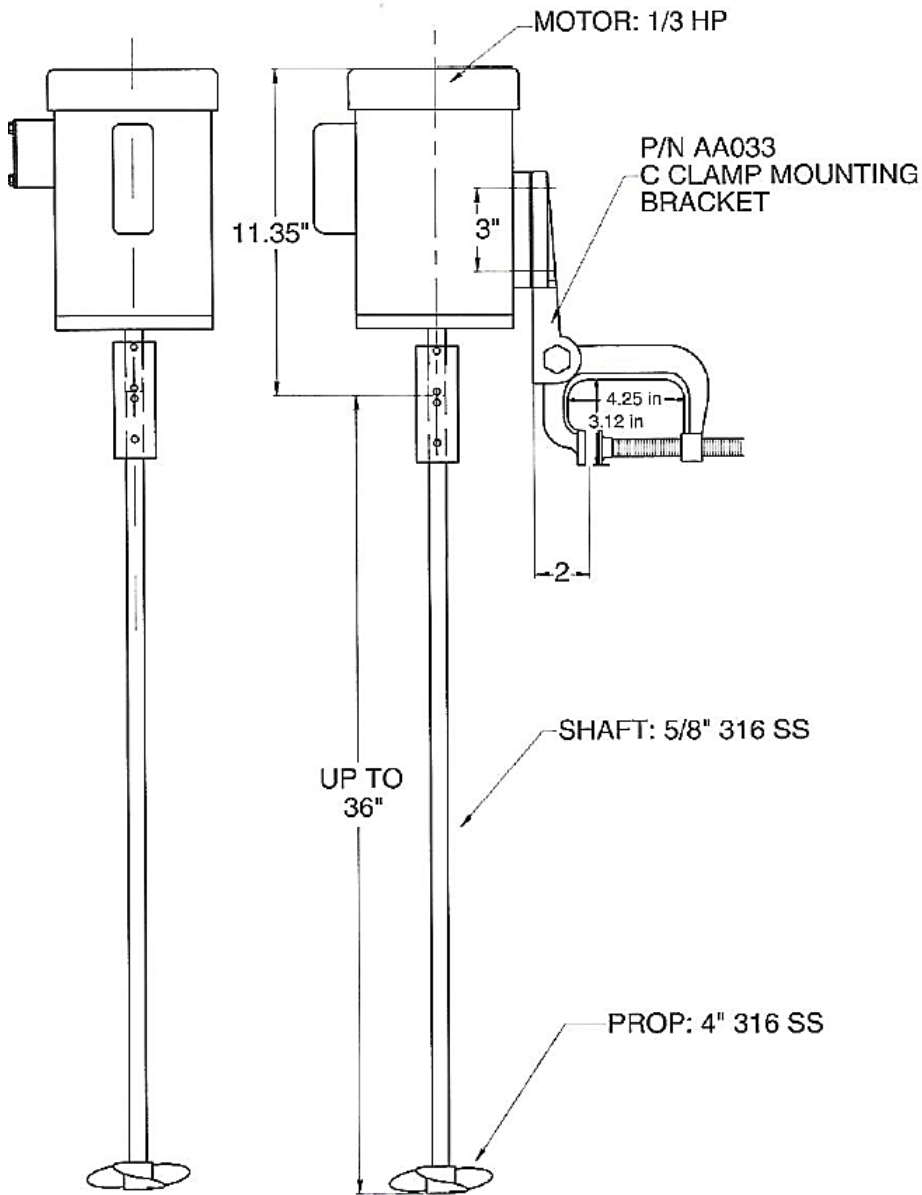
\*\* Shaft length maximums per shaft diameter:

- 5/8" - up to 36" long
- 3/4" - up to 48" long
- 1" - up to 72" long
- 1.25" - up to 96" long

ex.)

AH1B1	-	S036A	-	AS1
-------	---	-------	---	-----

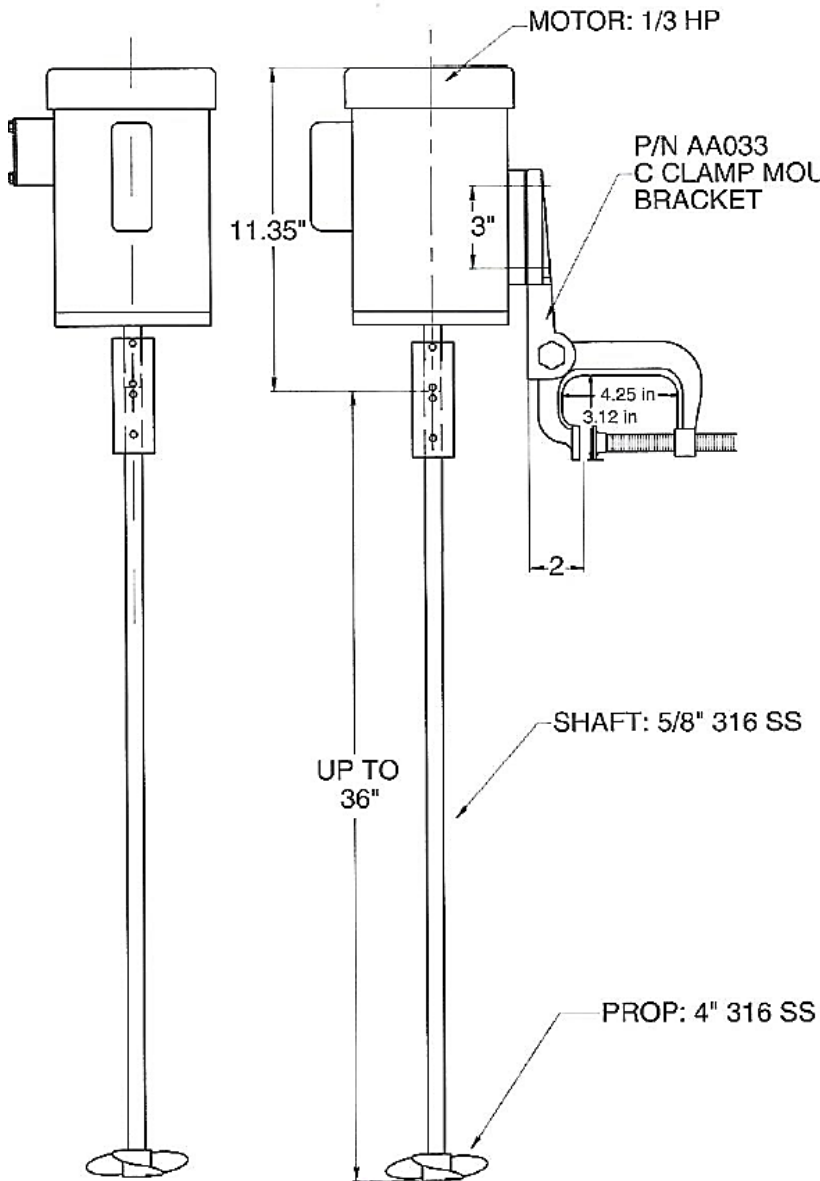
# Mixer Model No. AH---



## SPECIFICATIONS

- Speed: 1,725 rpm
- Propeller(s): 1 standard, multiple propellers optional. 4" diameter, 3 blade marine type, Material: 316 stainless steel
- Shaft: 5/8" 316 stainless steel, up to 36" long
- Motor: 1/3 HP, 1,725 rpm, TEFC, 1/60/115-230 or 3/60/230-460
- Mounting Options:
  1. (Standard) Mixer motor 56 frame foot pad can be used for rigid mounting.
  2. (Additional option) Mixer motor mounted to a C clamp for portable and adjustable mounting.Part number: AA033 (Page 8)

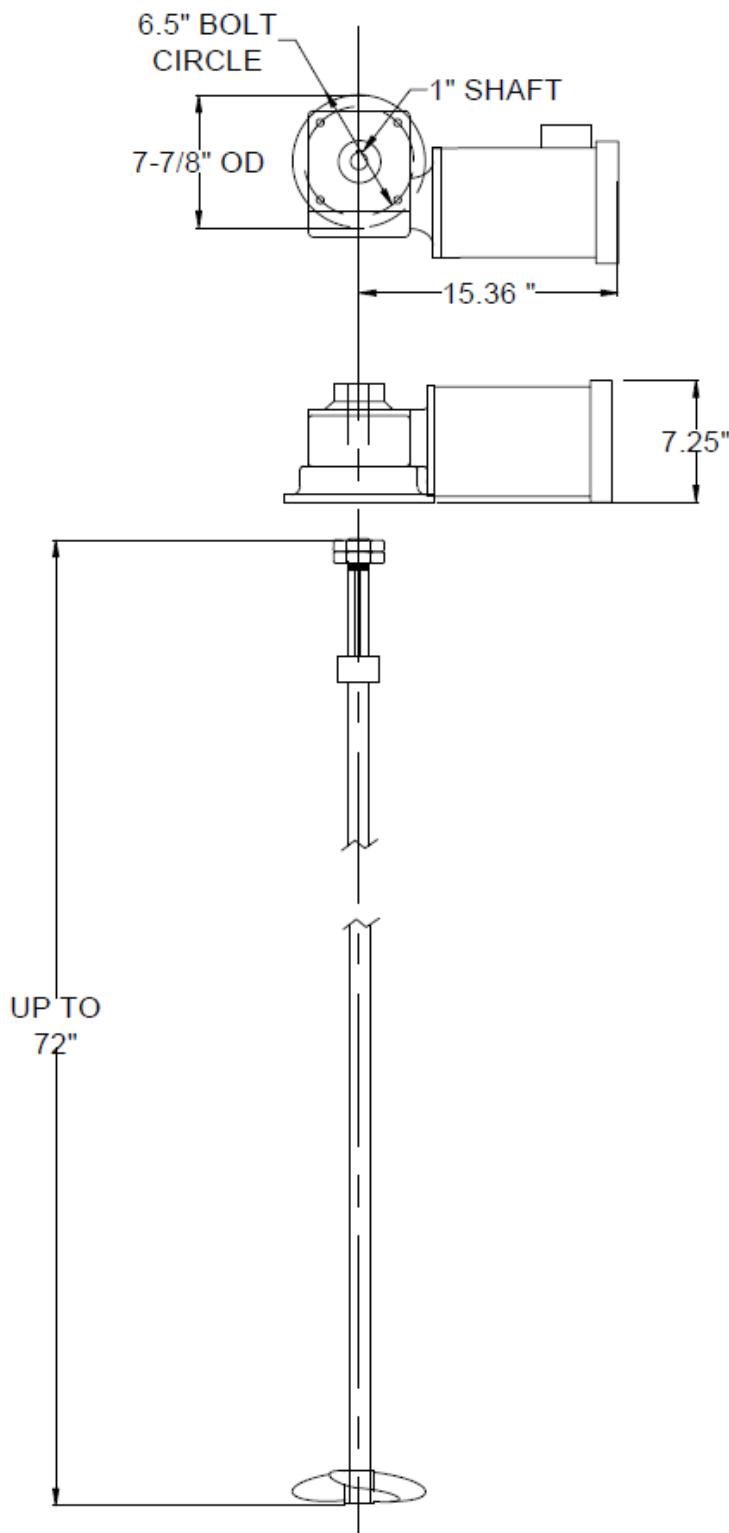
# Mixer Model No. AH--- W/ V.F.D. Variable Speed



## SPECIFICATIONS

- **Variable Speed:**  
200-2,000 rpm
- **Propeller(s):** 1 standard, multiple propellers optional. 4" diameter, 3 blade marine type, Material: 316 stainless steel
- **Shaft:** 5/8" 316 stainless steel, up to 36" long
- **Motor:** 1/3 HP, 200-2,000 rpm, 3 PH, variable speed/inverter duty, TEFC
- **Variable Frequency Drive Controller:**  
NEMA 4 enclosure, 1 PH or 3PH power options, 4-20 mA signal follower for remote speed control. The controller will be installed remote from the mixer motor. (Installation wiring not included)
- **Mounting Options:**
  1. (Standard) Mixer motor 56 frame foot pad can be used for rigid mounting.
  2. (Additional option) Mixer motor mounted to a C clamp for portable and adjustable mounting. Part number: AA033 (Page 8)

# Mixer Model No. AM---

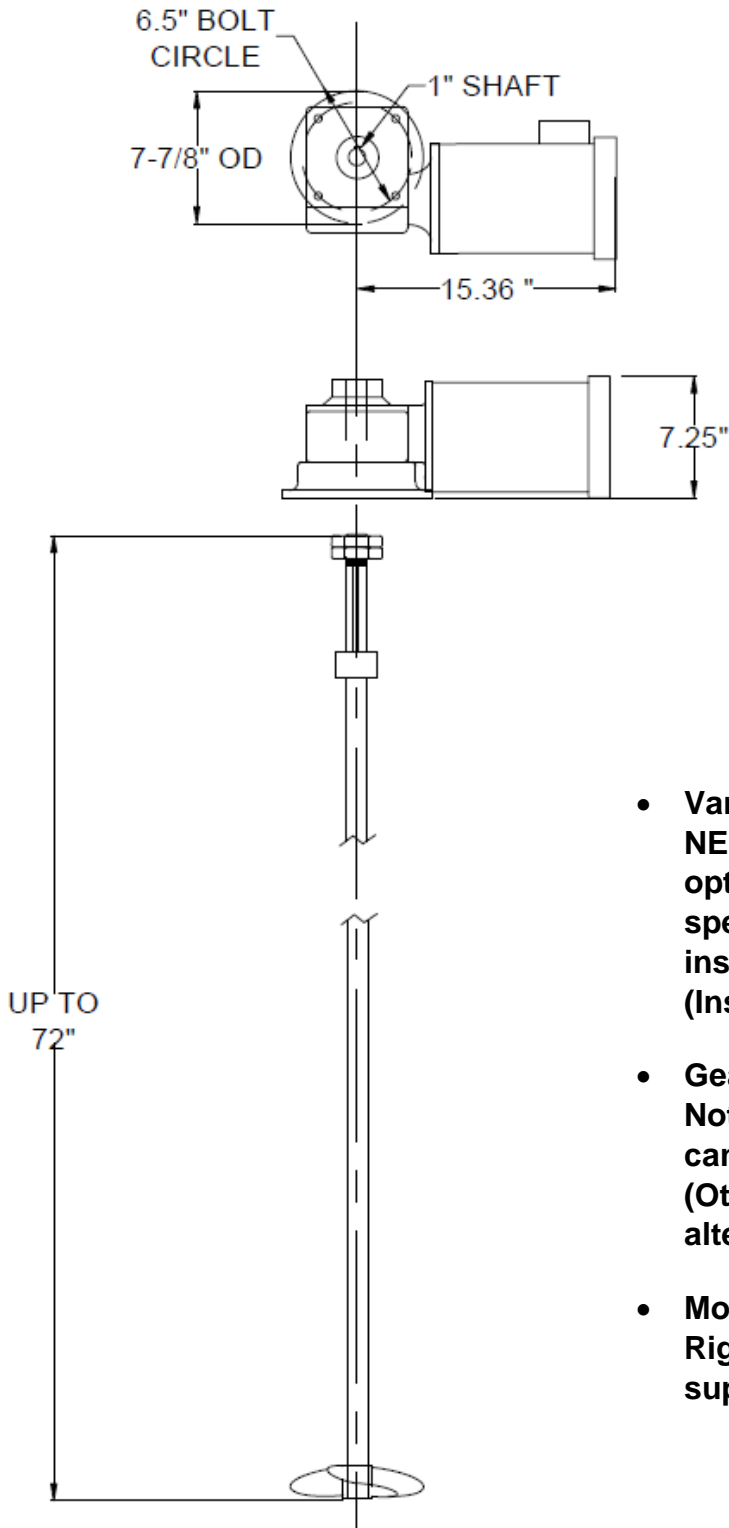


## SPECIFICATIONS

- Speed: 345 rpm
- Propeller(s): 1 standard, multiple propellers optional.  
8" diameter,  
3 blade marine type,  
Material: 316 stainless steel
- Shaft: 1" 316 stainless steel, up to 72" long
- Motor: 1,725 rpm, TEFC,  
1/60/115-230 or 3/60/230-460
- Motor Sizes Available:  
Model no. AA104A: 1/3 HP  
Model no. AA104C: 1/2 HP  
Model no. AA104D: 3/4 HP  
Model no. AA104E: 1 HP
- Gear reducer: worm gear type,  
5:1 gear ratio  
Note: if an application requires it,  
gear reducer can accommodate up  
to a 5 HP motor. (Other gear ratios  
available upon request for  
alternative mixing speeds.)
- Mounting: (Additional option)  
Rigid mount to fixed bridge type  
structure to support mixer above a  
tank.  
Part numbers:  
AA031 or AA032 (page 8)

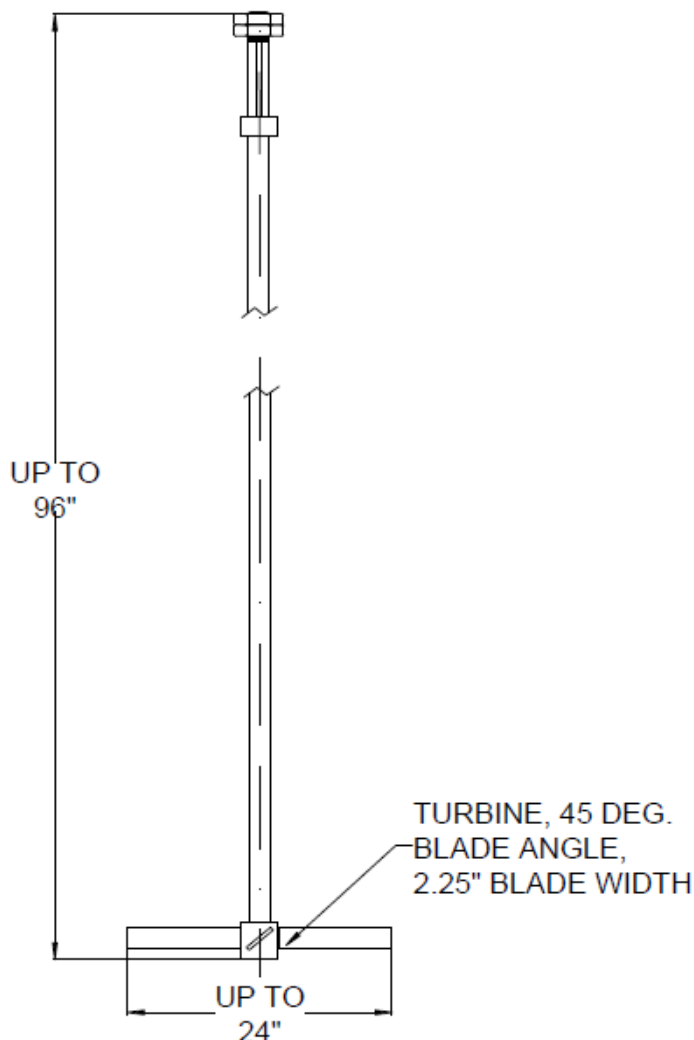
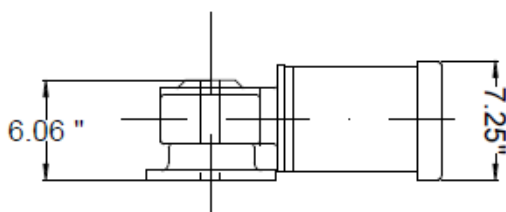
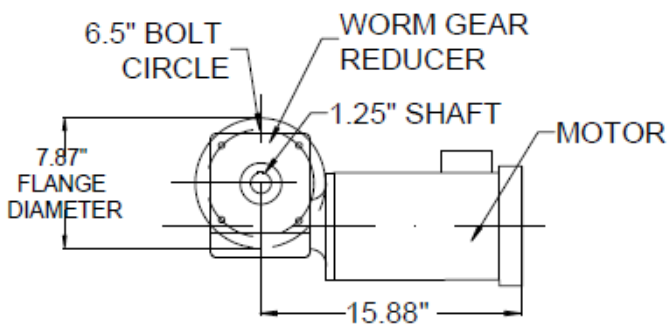
# Mixer Model No. AM--- W/ V.F.D. Variable Speed

## SPECIFICATIONS



- Speed: 40-400 rpm
- Propeller(s): 1 standard, multiple propellers optional.  
8" diameter,  
3 blade marine type,  
Material: 316 stainless steel
- Shaft: 1" 316 stainless steel, up to 72" long
- Motor: 200-2,000 rpm, 3 PH, variable speed/inverter duty, TEFC
- Motor Sizes Available:  
Model no. AA104AF: 1/3 HP  
Model no. AA104CF: 1/2 HP  
Model no. AA104DF: 3/4 HP  
Model no. AA104EF: 1 HP
- Variable Frequency Drive Controller:  
NEMA 4 enclosure, 1 PH or 3PH power options, 4-20 mA signal follower for remote speed control. The controller will be installed remote from the mixer motor. (Installation wiring not included)
- Gear reducer: worm gear type, 5:1 gear ratio  
Note: if application requires it, gear reducer can accommodate up to a 5 HP motor. (Other gear ratios available upon request for alternative mixing speeds.)
- Mounting: (Additional option)  
Rigid mount to fixed bridge type structure to support mixer above a tank.  
Part numbers:  
AA031 or AA032 (page 8)

# Mixer Model No. AH---

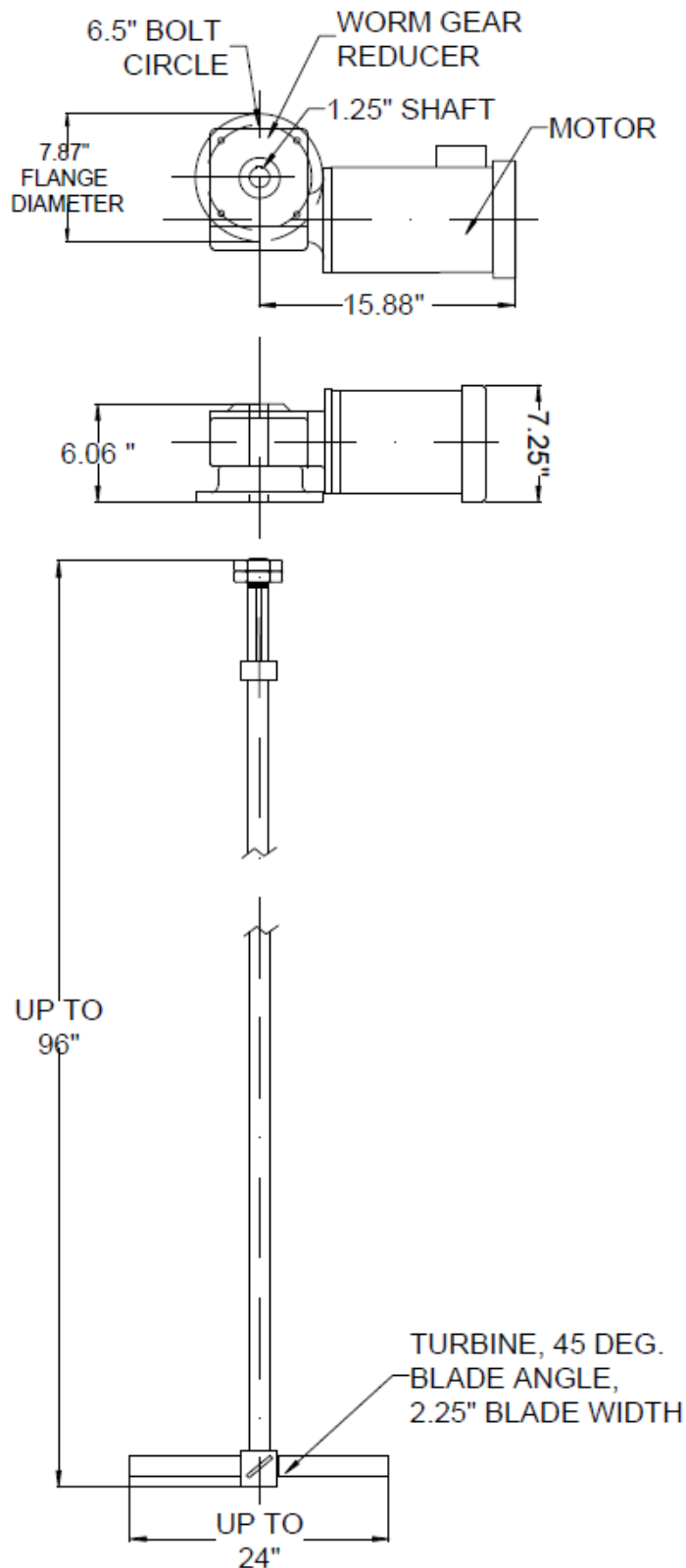


## SPECIFICATIONS

- Speed: 57 rpm
- Propeller(s): 1 standard, multiple turbines optional.  
4 blade turbine type,  
Material: 316 stainless steel
- Turbine size:  
16" up to 24" diameter
- Shaft: 1.25" 316 stainless steel, up to 96" long
- Motor: 1,725 rpm, TEFC,  
1/60/115-230 or 3/60/230-460
- Motor Sizes Available:  
Model no. AA110C: 1/2 HP  
Model no. AA110D: 3/4 HP  
Model no. AA110E: 1 HP
- Gear reducer: worm gear type,  
30:1 gear ratio (note: other gear ratios available upon request for alternative mixing speeds)
- Mounting: (Additional option)  
Rigid mount to fixed bridge type structure to support mixer above a tank.

Part numbers:  
AA031 or AA032 (page 8)

# Mixer Model No. AH--- W/ V.F.D. Variable Speed



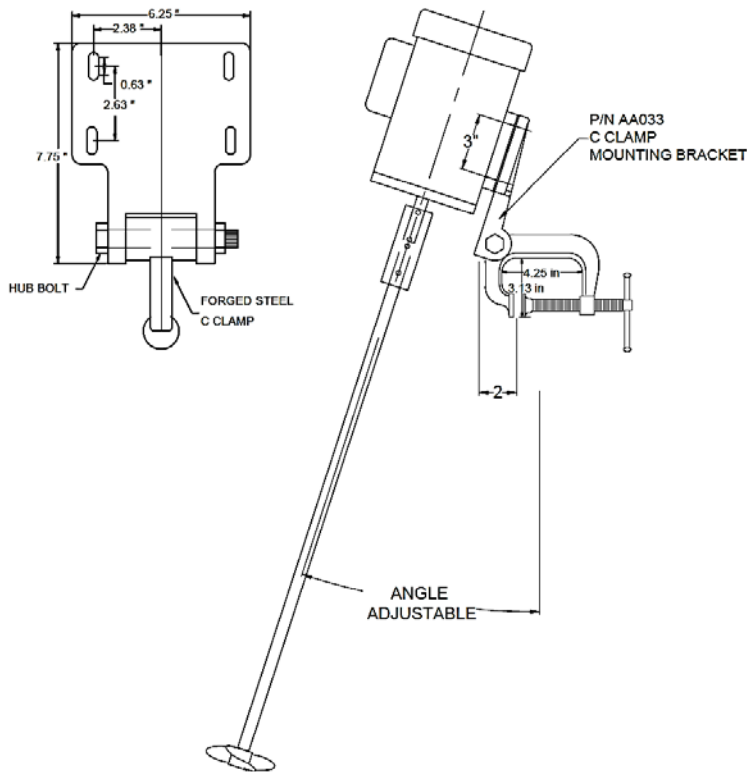
## SPECIFICATIONS

- Speed: 6-66 rpm
- Propeller(s): 1 standard, multiple turbines optional.  
4 blade turbine type,  
Material: 316 stainless steel
- Turbine size:  
16" up to 24" diameter
- Shaft: 1.25" 316 stainless steel, up to 96" long
- Motor: 200-2,000 rpm, 3 PH, variable speed/inverter duty, TEFC
- Motor Sizes Available:  
Model no. AA110CF: 1/2 HP  
Model no. AA110DF: 3/4 HP  
Model no. AA110EF: 1 HP
- Variable Frequency Drive Controller:  
NEMA 4 enclosure, 1 PH or 3PH power options, 4-20 mA signal follower for remote speed control. The controller will be installed remote from the mixer motor. (Installation wiring not included)
- Gear reducer: worm gear type, 30:1 gear ratio (note: other gear ratios available upon request for alternative mixing speeds)
- Mounting: (Additional option)  
Rigid mount to fixed bridge type structure to support mixer above a tank.

Part numbers:  
AA031 or AA032 (page 8)



# Mixer Mounting Brackets

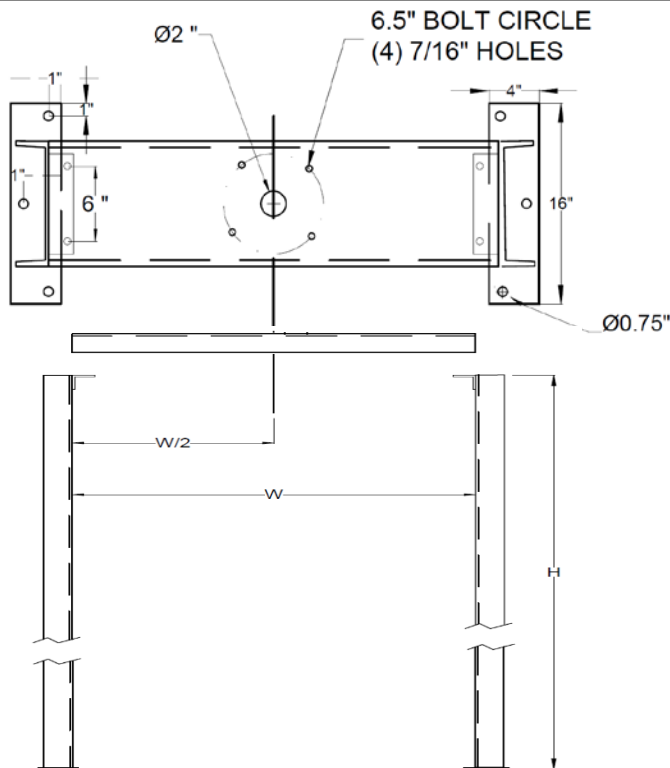


## SPECIFICATIONS

**Model No. AA033**

**C Clamp type mounting bracket for high speed mixer model AA102A**

- Forged steel C clamp
- Cast iron motor mounting
- Angle adjustable
- Installs to rigid vertical support structure exterior to tank, or to reinforced pad on tank wall.
- Not recommended for mounting directly on plastic tanks.



## SPECIFICATIONS

**Bridge type mixer mounting structure for geared mixers, models AA104 and AA110**

- Part no. AA031 for tanks up to 48" wide and 60" tall. (6" C Channel)
- Part no. AA032 for tanks up to 72" wide and 96" tall. (10" C Channel)

### **MADDEN PUMP**

P.O. Box 387 • Elkhart, IN 46515 • USA  
 Phone: (574) 295-4292 • Fax: (574) 295-7562  
 Toll Free: 1-800-369-6233  
 E-mail: [info@maddenpump.com](mailto:info@maddenpump.com)  
 Website: [www.maddenpump.com](http://www.maddenpump.com)

### **SOLD BY:**